



Network Presentation

Net4Society and European Commission
Warsaw, the 8th of November 2018

Izabela Grabowska

SWPS University of Social Sciences and Humanities, Warsaw and
Center of Migration Research

Also on behalf of Peter Scholten, IMISCOE Coordinator, Erasmus University Rotterdam



IMISCOE

**INTERNATIONAL MIGRATION,
INTEGRATION AND SOCIAL COHESION
RESEARCH NETWORK**

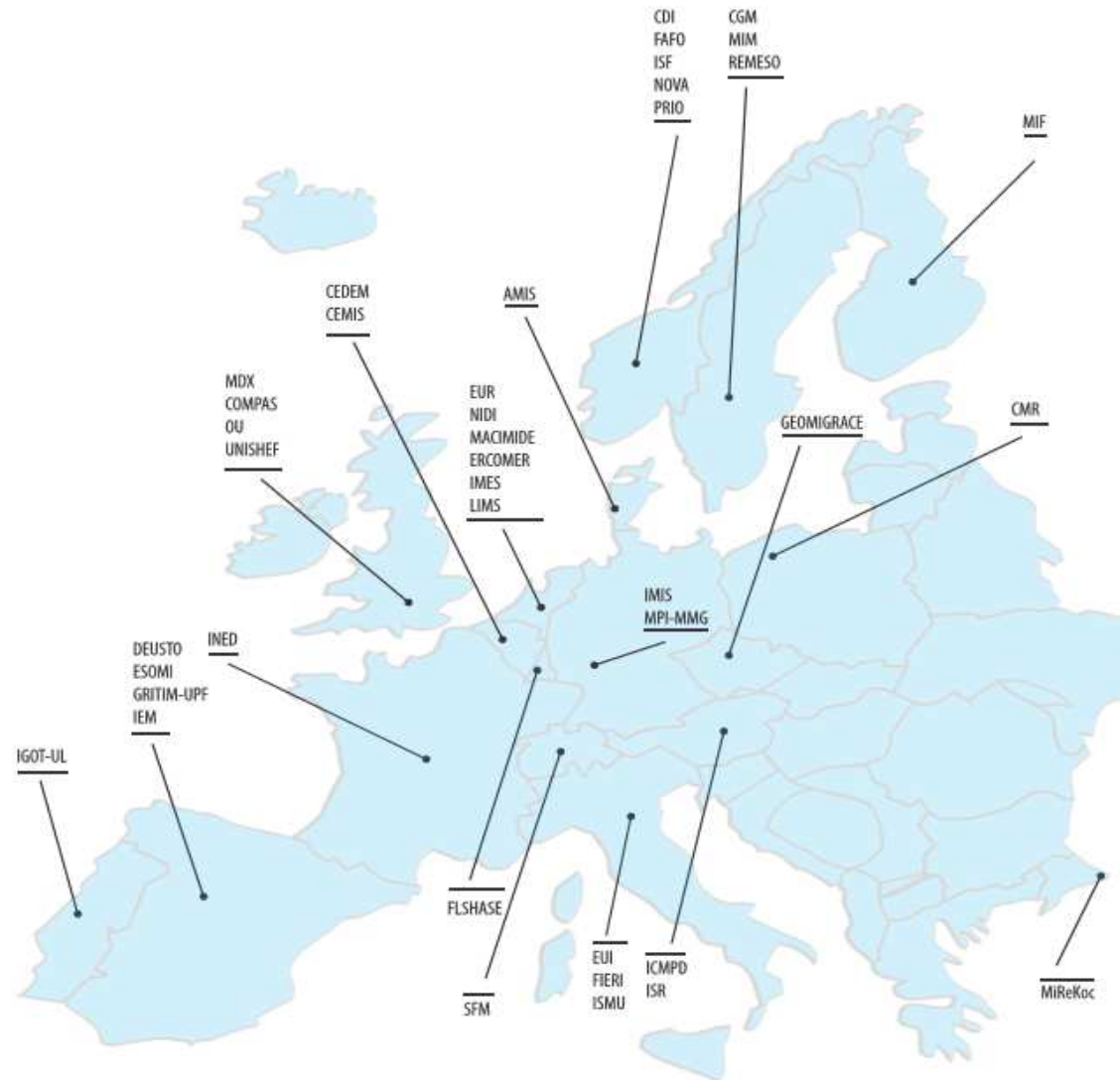
*IMISCOE is the largest
European network of scholars
in the area of migration and
integration research.*

History of the IMISCOE Research Network

- **International Migration, Integration and Social Cohesion in Europe (IMISCOE) was established as a Network of Excellence in April 2004.** Initially, the European Commission funded the network (in a period of 1 April 2004- 31 March 2009) for five years. The funding was seen as an investment that should encourage cooperation between researchers in the EU. **NOW SELF-SUSTAINING NETWORK!**
- In 2010, when the funding expired, IMISCOE showed its success and decided, with the participants, to continue the collaboration in an independent IMISCOE research network. Since, 2014 the coordination of the network is allocated to Erasmus University Rotterdam.
- By 2018, the network expanded its participation and success to **40 institutes and more than 700 researchers.**
- IMISCOE has an infrastructure for the training of future researchers and focuses on disseminating the knowledge that is generated within the network. IMISCOE's legitimacy and relevance is to be seen in its ability to reinvent itself as a Research Network.
- **2019- 15th IMISCOE Anniversary!**



Overview of member research institutes



IMISCOE contributions



Platform for excellent scholars throughout (and beyond) Europe, to initiate comparative research and organize research projects.

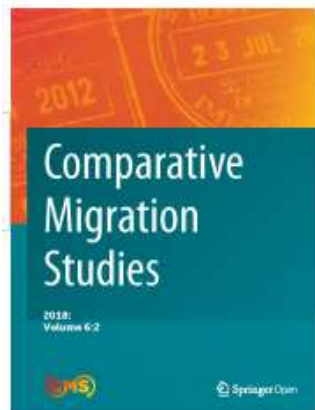
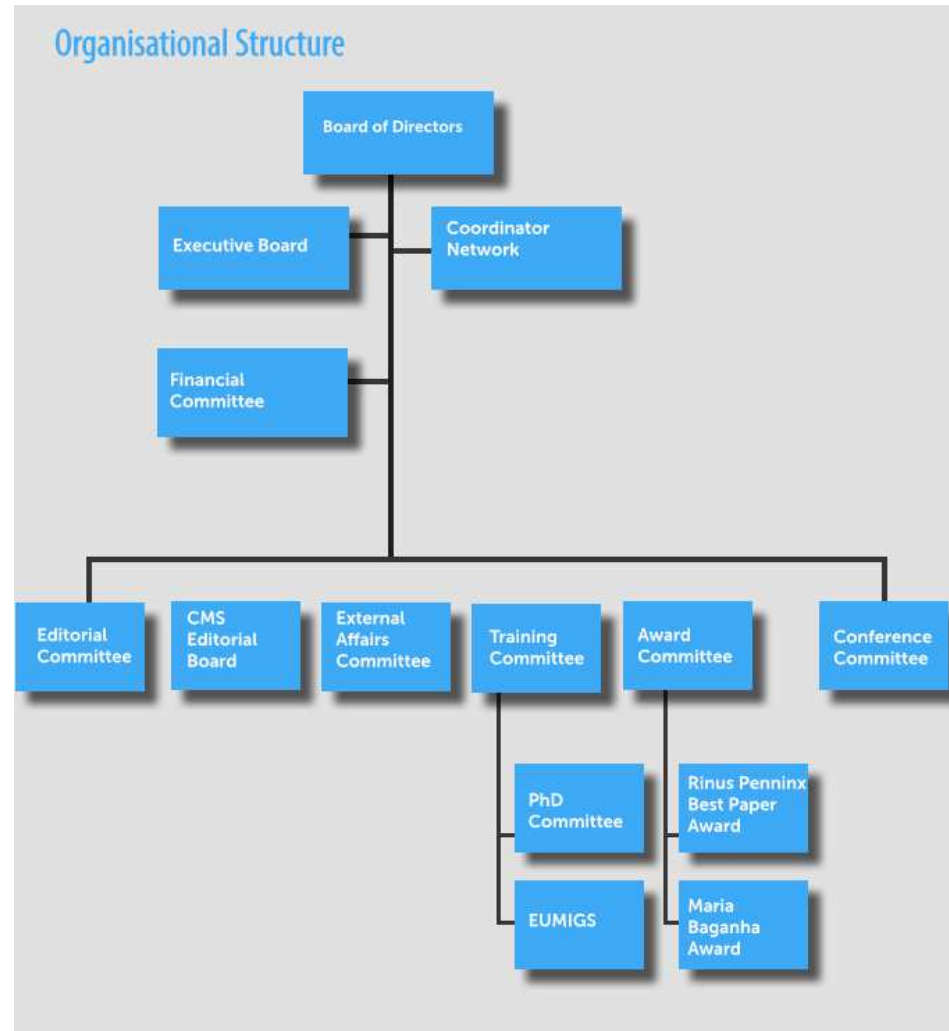


Training of young researchers and the exchange of researchers throughout and beyond Europe.



Enhancing mutual dialogue between society and researchers (policy, politics, and civil society)

IMISCOE structure



My testimonial with IMISCOE

- Since 2006 with member institute Center of Migration Research
- From young post-doc to professor
- 2010-2018 Member of IMISCOE Board of Directors, Elected Deputy Chair
- 2010-2018 Member of IMISCOE Executive Board
- Participated in every IMISCOE conference since 2006

TESTIMONIAL



IMISCOE activities cloud



IMISCOE annual conferences: Spring (small scale) & Summer (big)



IMISCOE Solidarity Fund

For scholars at risk, mostly from Turkey

Standing Committees

Standing Committees involve research clusters that have been established for a longer period of time, and have a broad programme of activities and a broad audience that they serve within IMISCOE.



IMISCOE

Two H2020 platform projects accumulating migration knowledge, data and know-how, know-whom, know-when



RESEARCH SOCIAL
PLATFORM ON MIGRATION
AND ASYLUM

IMISCOE

What IMISCOE members do & can do about active participation in the EU calls?

- To participate in the National Reference Groups across EU with migration topics, through National Contact Points
- To share knowledge with EU institutions
- To link up with other research & policy networks
- To discuss and encourage for future FP:
 - Double-stage procedure in FP, societal challenges (e.g. very good practice in multilateral NORFACE research program)
 - Differentiation of personal costs for CEE and outside EU (the PMs from these institutions are not relevant due to wage gaps)
- To open for further discussions...

The logo for IMISCOE, consisting of the letters 'IMISCOE' in white, bold, sans-serif font, set against a solid blue rectangular background.

Upcoming IMISCOE events

29-30 November 2018	IMISCOE - CrossMigration Research Conference (Rotterdam)
28 February 2019	IMISCOE Board of Directors meeting, CEDEM, University of Liege
28 February - 1 March 2019	IMISCOE Spring Conference, 'Migration and Social Protection in the European Union', organized together with MITSOPRO, CEDEM (Liege)
28-29 March 2019	IMISCOE Spring Conference, 'Transforming Mobility and Immobility', University of Sheffield (Sheffield).
26-28 June 2019	16th IMISCOE Annual Conference, 'Understanding International Migration in the 21st Century: Conceptual and Methodological Issues and Trends in Migration Studies', MIM, Malmo University (Malmo)

IMISCOE

Thank you for learning & reminding yourself about IMISCOE RN.

When you are home, please tell two of your colleagues about the IMISCOE RN.

www.imiscoe.org

www.izabelagrabowska.com